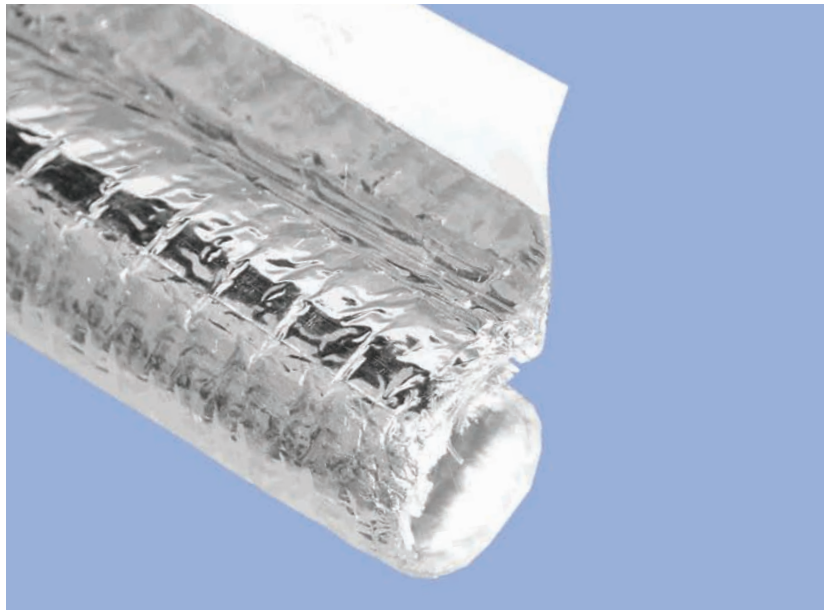


Product Highlights

- Mechanical Abrasion
Excellent Radiant Heat Protection
- Convective Heat Protection up to 200°C
- Self-Wrapping Design
- Flexible
- Fluid and Chemical Resistant



Therm-L-Wrap™

Bentley-Harris® Therm-L-Wrap is a self-wrapping, reflective sleeve designed to provide thermal protection from both radiant and convective heat. Composed of a woven fiberglass base fabric and a lamination of aluminum foil, the product can withstand convective heat soaks up to 200°C and simultaneously protect critical components from radiant or reflected heat.

The unique woven structure imparts a level of flexibility not found in other reflective products. It also allows the product to maintain a circular profile when flexed.

The self-wrapping design of Therm-L-Wrap allows for quick and easy installation while the addition of a self-sealing adhesive reinforcement allows for permanent closure. The adhesive strip acts as a barrier to dirt and fluids while maintaining the full integrity of the finished aluminized sleeve.

BentleyHarris®
Protection Products